

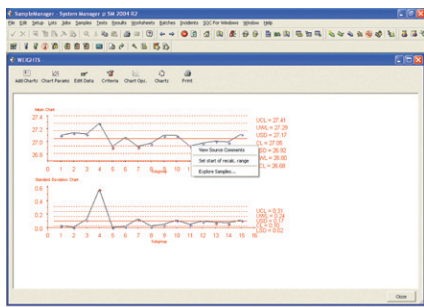
Count on Thermo Scientific SampleManager LIMS, an enterprise solution for global companies. SampleManager reduces costs and increases productivity, while ensuring the quality of your petrochemical and chemical products.

## Thermo Scientific SampleManager LIMS™

The Enterprise LIMS for Chemical and Petrochemical Companies



SampleManager's fully integrated SOC capabilities allow operators to be altered to data trends and drill down to review the associated process and laboratory results.



### Challenge

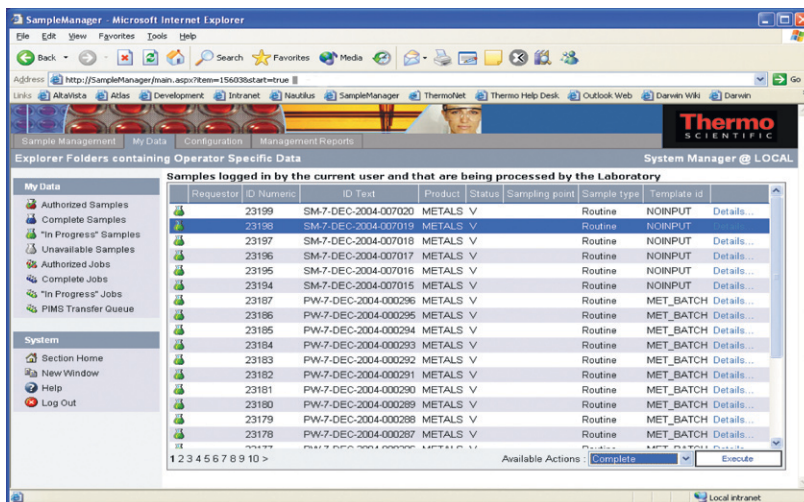
Within Petrochemical and Chemical manufacturing, Laboratory Information Management Systems (LIMS) are an important component in a comprehensive quality manufacturing solution. Most environments include Process Information Management Systems (PIMS), Manufacturing Execution Systems (MES) and Enterprise Resource Planning (ERP), which continuously monitor and control the plant processes from raw materials through to monitoring and execution of production. The LIMS – which stores product quality data – generally operates independent of the other systems. LIMS provide the data for the final quality assignment of the batch that has been produced, as well as hold the off-line quality results collected throughout the manufacturing process. Therein lies the problem. Companies contending with two separate islands of information battle with inefficient data management and decision-making, which adds costs and delays to the process.

Today, companies need a LIMS with greater flexibility and the ability to meet the needs of the broader organization. An ideal LIMS is one that serves as an integrated platform capable of supporting key enterprise processes and systems. Enterprise LIMS need open communication with lab and enterprise applications and greater access to information to provide insight into data across the organization.

### Count on Thermo Scientific

Thermo Scientific SampleManager is the LIMS of choice for many chemical and petrochemical companies. It can be implemented in one or multiple instances, can be deployed for large and small labs alike, is available in multiple languages and supports both Oracle and Microsoft database servers. It is flexible and configurable to accommodate different manufacturing methods, including continuous production and batch manufacturing workflows. Laboratory analysis and sampling

## SampleManager LIMS



Reviewing SampleManager data through the Web interface.

schedules can be driven on a shift basis, or batch driven from ERP triggers. Different lab types and user communities can be supported across the enterprise using the same LIMS.

Built on Microsoft® .NET, SampleManager integrates easily with other applications and instruments in and out of the lab, providing one standard user-interface and helping companies to enforce process standardization across multiple labs.

SampleManager includes a web browser interface for remote sample login, data access, result entry and reporting. Secure access to the LIMS data is available for laboratory staff, remote users and external customers. SampleManager's web services interface allows the LIMS to be delivered as a network service that can be integrated using common Internet standards, such as ASP, XML, SOAP and HTTP. These industry standard tools help dramatically simplify and reduce the costs of integrating SampleManager with other laboratory and business systems. PIMS, MES and ERP may be integrated directly with SampleManager using its modular solutions to ensure a rapid deployment of the system.

### Ensure Product Quality and Avoid Delays

With an enterprise LIMS, companies can spot trends and monitor product quality more quickly and easily, dramatically improving their overall quality control process. An integrated approach results in better data flow, minimum redundant data, elimination of transcription errors and increased laboratory efficiency – all while maintaining the highest quality standards. Duplicate data and manual entry of parameters are eliminated through instrument integration, directly feeding results from GCs and other instruments into SampleManager. SampleManager helps ensure accurate data flow between the lab and the rest of the organization. Having that data available to managers and decision-makers and propagating those decisions organization-wide leads to reduced production time and increased efficiency gains.

### Lower Total Cost of Ownership

A global solution helps reduce the total cost of ownership. An independent study, commissioned by Thermo Fisher Scientific, confirms this. Enterprise LIMS reduce costs by centralizing and consolidating IT and technical support resources. An enterprise LIMS reduces downtime and increases productivity for the end-user. Lower costs can also be achieved in the areas of implementation, systems integration, upgrades, application development and training. In addition, standardization streamlines vendor relationships and improves purchasing power. Nowhere is this more important than chemical and petrochemical manufacturing, where margins are key to maintaining competitive advantage.

### Partnering with Thermo Fisher Scientific

Thermo Fisher Scientific is the worldwide leader in laboratory software and related services, providing enterprise-wide, multi-laboratory solutions that have become the corporate standard at leading organizations. Our Thermo Scientific LIMS and CDS control manufacturing quality data at many of the world's chemical and petrochemical companies – from DuPont and Dow Corning to Eastman, PEMEX and Basell.

To support our global customers, we provide implementation, training, maintenance and support from the industry's largest worldwide informatics services network. SampleManager is the flagship LIMS in our comprehensive software portfolio and delivers tangible results to the chemical and petrochemical industries.

### For More Information

Visit us on the web at [www.thermo.com/informatics](http://www.thermo.com/informatics) or call +1 866 463 6522 (US) or +44 161 942 3000 (Intl).